

## **Housing and Communities Overview and Scrutiny Panel September 2023**

### **Housing Strategy and Development Update**



## Major refurbishments:

### 38 & 40 Ambleside, Lymington

- 2 x 2 bedroom houses



## Major refurbishments:

### 1 & 2 Peak Hill Cottages, East Boldre

- 2 x 3 bedroom structurally unsound

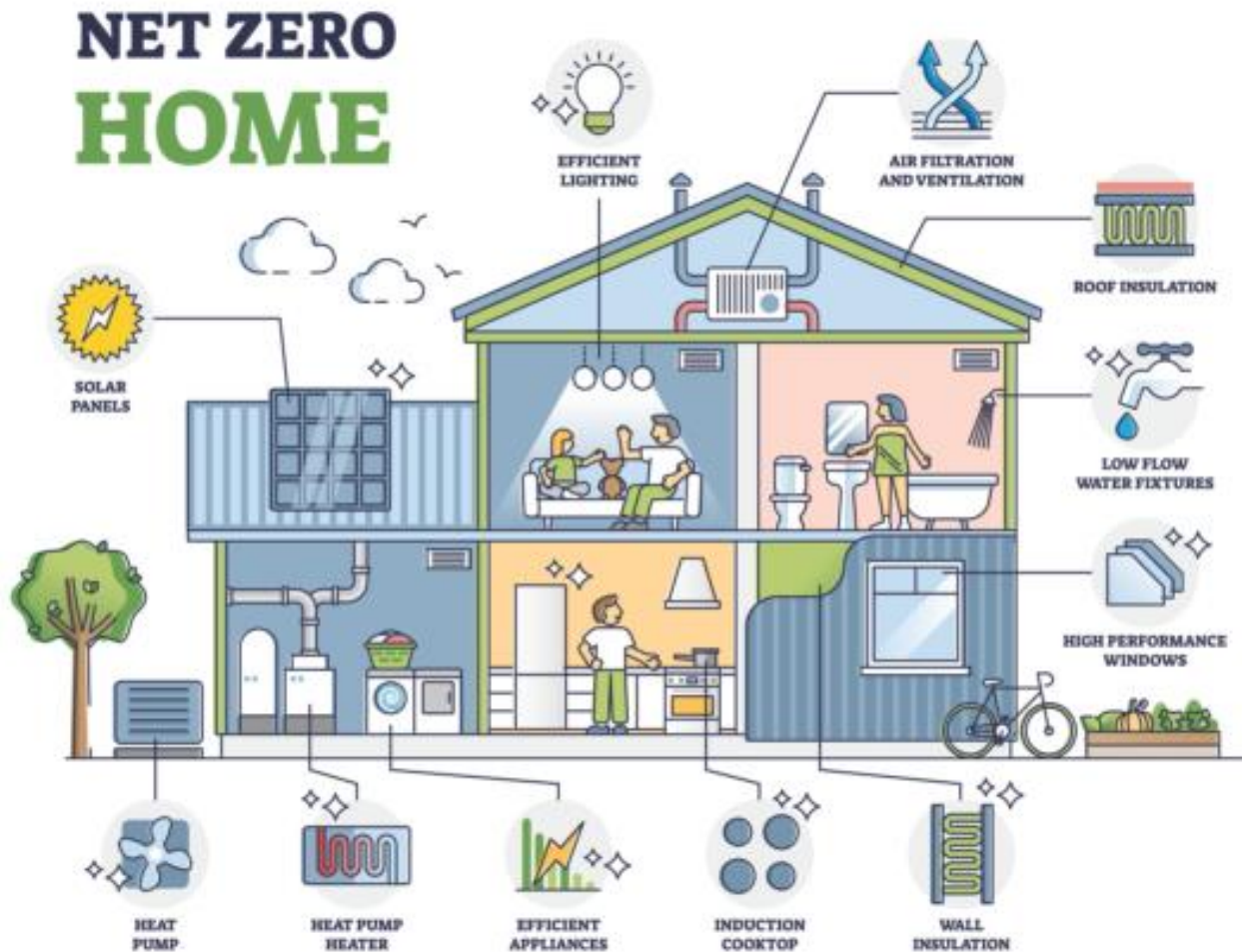


## Testwood Club, Totton

- F E Chase Building Contractor
- To meet 'Future Home Standard'
- 12 flats for completion Dec 23/Jan 24



## Future Home Standard



## Burgate Acres, Fordingbridge

- Metis Homes
- 14 x S106 element + 3 additional shared ownership
- Homes England funding
- Due to complete from November '23 to May '24



# Under construction

## Moore Close, New Milton (16)

- 16 affordable homes
- 11 x Social Rent
- 5 x Shared Ownership
- Homes England Grant £1.5m
- In Building Contract with....



## Hythe Medical Centre, Hythe (22)

- Demolition commenced
- Tender main contract Nov
- Homes England grant?





## 37/39 Salisbury Road, Totton (20)

- Planning approved
- Detailed plans
- Next: Tender building contract



## 14 Parsonage Barn Lane

- Planning in place
- Reconfigure single person temporary accommodation
- 5 x 2 and 3 bedroom self contained family TA homes
- Finalising detailed plans. Start on site in October

## 14 Parsonage Barn Lane

- Planning in place
- Reconfigure single person temporary accommodation
- 5 x 2 and 3 bedroom self contained family TA homes
- Finalising detailed plans. Start on site in October

## Local Authority Housing Fund

- Central Government funding to provide 12 resettlement homes
  - 10 for Ukrainian families and 2 for Afghan families
- £1.8m grant funding
- 2 homes purchased and ready for occupation this month
- Further 8 homes identified – at various stages
- Target for delivery November 30th

# Current Development Programme

## Affordable housing development programme as at 20th September 2023

	Affordable housing completions								
	2018/19	2019/20	2020/21	2021/22	2022/23	2023/24	2024/25	2025/26	
<b>Completed (previous years)</b>	57	90	64	24	50				
<b>In Contract (Completed or full delivery expected)</b>									
Buy Back completions									
New Build (planning-led, NFDC land, other land, off the shelf) (2)						28	1		
<b>Sub total</b>						<b>28</b>	<b>1</b>		
<b>Predicted with delivery expectations (planning in place, no planning required or high planning confidence)</b>									
Buy-Back & Off The Shelf purchases						27	15	15	
New Build (planning-led, NFDC land, other land, off the shelf) (4)							58	26	
<b>Sub total</b>						<b>27</b>	<b>73</b>	<b>41</b>	

	2018/19	2019/20	2020/21	2021/22	2022/23	2023/24	2024/25	2025/26	2025/26+
<b>Total</b>	57	90	64	24	50	55	74	41	
		147	211	235	285	340	414	455	

<b>Future programme assumptions and identified sites</b>										
New Build (planning-led, NFDC land, other land, off the shelf) (6)							23	69	63	
NFDC conversion works (8)									18	
<b>Sub total</b>							<b>23</b>	<b>69</b>	<b>81</b>	

**Completed or certain = 314**

**'Firm' pipeline = 141**

**Identified future opportunities = 173**

**Any questions?**